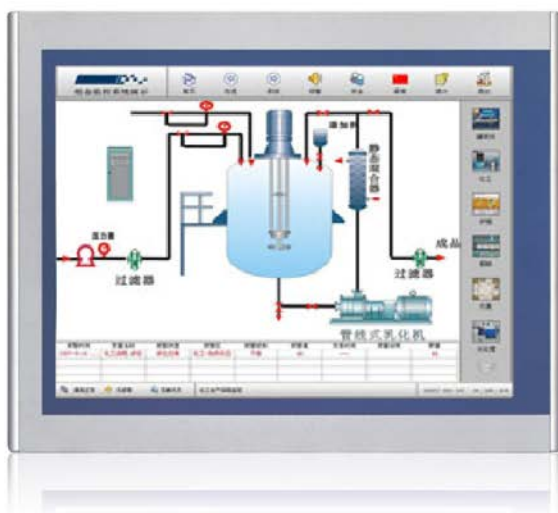



Model: SLPM-10T
10.4" Slim Line - Industrial Panel Monitor with Touch Screen



Main Feature

- 10.4" SVGA LED panel support 800x600 pixels
- 6mm Aluminum Magnesium Alloy front bezel (with PET protection film) - light weight design
- NEMA4 / IP 65 compliant front panel, with Rugged construction design
- Aesthetic ultra-thin front bezel for minimize stain water & dust
- Input signal : VGA + DVI + USB or RS232 (Optional for Touch Screen - 5 wire resistive)
- OSD control keys to optimize the display (Hot-Key for quick "Brightness & Contrast" adjustment)
- Wide Range 12-24VDC Input
- Meet standard VESA hole (75x75 & 100X100mm), support desktop stand/wall mount /swing arm mounting
- Wide Range Operating Temperature -20 °C to 60 °C 

Specification	
Product Model	SLPM-10T
LCD Panel	Display Type : 10.4" SVGA LED Panel Resolution : 800x600 Max. color : 16.2M Luminance : 400 cd/m2 View Angel : 130° (H), 100° (V) Pixel Pitch : 0.264 x 0.264 mm Contrast Ratio : 500 : 1 Response Time : 25 ms LED backlight lifecycle : 50,000hrs
Signal Input	VGA + DVI
Protect Glass	3 mm strengthen glass
OSD	Auto; Menu; Left; Right; Exit/Select; Power On/Off (Hot-Key for quick "Brightness & Contrast" adjustment)
Touch Screen	Internal USB or RS-232 industrial grade 5 wire Resistive Touch controller Resolution: 4096 x 4096 Light transmission: 80% or more

	Surface hardness : 3H Operating force : ≤100g Life expectancy : 35 Million Operation system : Window 2000 / XP / Vista / 7 / CE, DOS , Linux
Power Supply	Input: 12-24VDC Wide range
Construction	Aluminum magnesium alloy front panel with heavy-duty steel chassis
Environment	Operating temperature: -20 °C to 60 °C Storage temperature: -20 °C to 70 °C Storage humidity: 10% to 95%, non-condensing Vibration: 50 to 500HZ 1G PTP Shock: 10G /peak(11m sec)
Safety	CE/FCC/Rohs
Dimension W x H x D (mm)	Dimensions: 301 x 235 x 49 mm

Ordering Information

SLPM-10T	10.4" Slim Line - Industrial Panel Monitor with Touch Screen
(Optional) AC to DC Adapter	12VDC/60watt Power Adapter, input 110-240VAC

Structure Diagram (Mounting Hole Size: 283 x 223 mm)

Unit: mm

