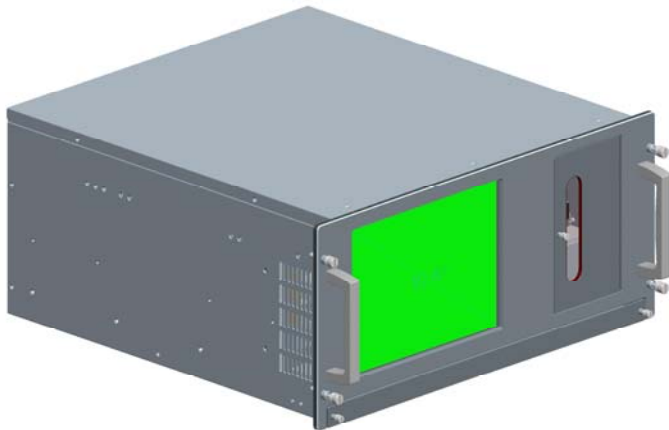


Model: RPC-870-10
4U 19" Rackmount Rugged Chassis,
with 10.4" LCD

RPC-870-10T
4U 19" Rackmount Rugged Chassis,
with 10.4" LCD & Touch Screen



Main Feature

- 4U 19" Rack Mount Rugged Design
- Aluminum front panel and Steel chassis, Front Panel meet IP65/NEMA4 Standard
- Front 10.4" TFT LCD display (Option Touch Screen), built-in slim keyboard and Touchpad drawer
- Shock-resistant Driver Bay to hold 1 x 5.25" and 2x 3.5"
- Flexible mechanical design supports PS2 or Redundant power supply
- Two Front Accessible USB port
- Support SBC (14 Slots) or ATX / Micro-ATX / Mini-ITX Main Board
- Power status indicator by front viewable LED indicator

Specification

- Disk Driver Bay: 5.25"x1, 3.5"x2 (Internal).
- Cooling Fan: 1x(80x80x25mm) hot swap cooling fan with air filter
- I/O interface: 2xUSB Accessible from the front door
- Support OSD function (underneath Top Cover)
- Keyboard: built-in 88-keys (US) keyboard and touch pad.
- Dimension: (WxHxD): 430x177x470mm

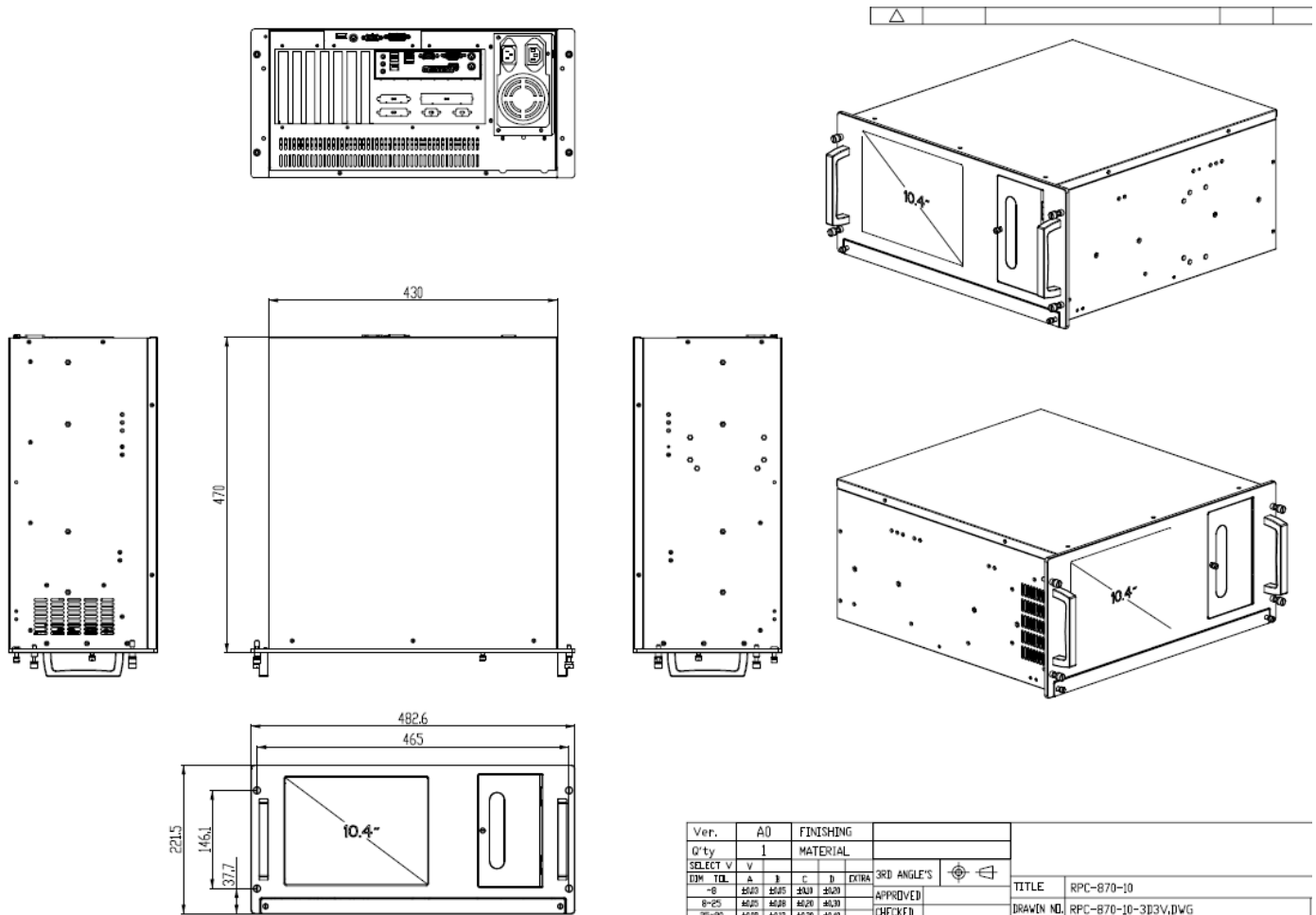
- Chassis Color: Antique White (Optional: Black)
- Touch screen: resistive (optional)
- Display:
 1. Display Type: 10.4" XGA TFT LCD
 2. Resolution: 1024 x 768
 3. Max. color: 16.7M
 4. Luminance: 350 nit
 5. View Angel: 140° (H) , 120° (V)
 6. Pixel Pitch: 0.20525 x 0.20625
 7. Contrast Ratio: 800 : 1
 8. Response Time: 25ms
 9. Power Consumption: 5 W
 10. LCD TBF: 40,000 hrs

Touch Screen (Optional)

- Type: Analog resistive type: 25VDC \geq 20M Ω
- Resolution: continuous
- Light transmission: 80% or more
- Controller: RS-232 interface or USB
- Power consumption : < 5V @1mA
- Surface hardness: 3H
- Operating force: \leq 100g
- Life expectancy: 1 Million

Ordering Information	
RPC-870-10	4U 19" Rackmount Rugged Chassis, with 10.4" LCD
RPC-870-10T	4U 19" Rackmount Rugged Chassis, with 10.4" LCD & Touch Screen

Structure Diagram



Ver.	A0	FINISHING									TITLE	RPC-870-10
Q'ty	1	MATERIAL									DRAWN NO.	RPC-870-10-3D3V.DWG
SELECT	V											
DM	TDL	A	B	C	D	EXTRA	3RD ANGLE'S					
-8		8020	8025	8030	8035		APPROVED					
8-25		8020	8025	8026	8030		CHECKED					
25-80		8020	8025	8030	8040							