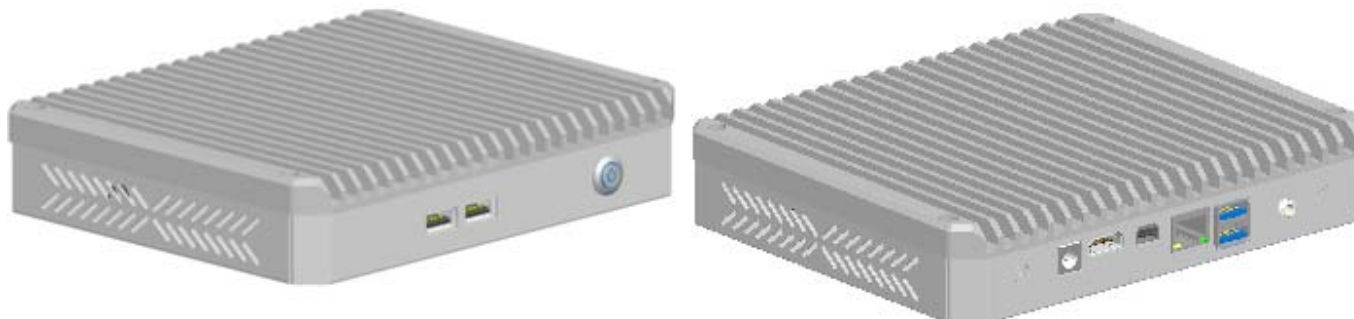


Model: MPCX-12XXUPH

Low Profile - Fanless Intel® Core™ i3/5/7/9 series Digital Signage Player



Application:

Digital Signage Player, Intelligent Traffic Control, Vision Inspection, CCTV/DVR system; ...

Specification	
Item	Description
Product Model	MPCX-12XXU, MPCX-12XXP, MPCX-12XXH
Processor (Intel® Alder Lake)	Intel® Core i3 1210U, 1220P Processor Intel® Core i5 1230U, 1240P, 12450H Processor Intel® Core i7 1250U, 1260P, 12600H Processor Intel® Core i9 12900H Processor
Chipset	Intel® integrated with processor
Memory	1 x DDR4 SO-DIMM Socket up to 32GB
Storage	1 x M.2 2280 2242 SSD (NVME, MINI PCI-E) Key M
Audio	Realtek ALC897, 6 channel surround audio
LAN	Intel® i219V Gigabit LAN Controller
USB port	3 x USB 2.0/3.2, 2 x USB 2.0
Graphic	1 x HDMI 2.0 (4K), Maximum Resolution 4096 x 2304 @ 60Hz 1 x Mini DP (4K), Maximum Resolution: 4096 x 2304 @ 60Hz
Expansive interface	1 x M.2 2230 Key E Slot for WIFI & Bluetooth
I/O port	1 x RJ45, 4 x USB, 1 x Mini DP, 1 x HDMI, Power Switch, DC input
Power Supply	9-30VDC wide range Input AC Adapter Input: 100~240VAC, 50/60Hz; Output: DC 12V/ 5-7A
Supporting OS	Windows 7, 10, , 11, Linux
Environment	Operating temperature: -10 °C to 60 °C Storage temperature: -40 °C to 80 °C Storage humidity: 10% to 90% non-condensing Vibration: 17 to 500HZ 1G PTP; Shock: 1G /peak (11m sec)
Safety	CE/FCC/ROHS
Dimension W x H x D	180 x 150 x 36 mm
Ordering Information	
MPCX-12xxUPH-i3	Intel® Core i3 Digital Signage Player

MPCX -12xxUPH-i5	Intel® Core i5 Digital Signage Player
MPCX -12xxUPH-i7	Intel® Core i7 Digital Signage Player
MPCX -12xxUPH-i9	Intel® Core i9 Digital Signage Player
Optional - RAM	8 to 32GB DDR4 SO-DIMM RAM
Optional - SSD	128 GB to 2TB SSD (M.2 2280)
Optional - WIFI	WIFI + Bluetooth with Antenna (M.2 2230)
Optional - OS	Windows 10/11 Professional; IoT Enterprise...; Linux / Ubuntu

Structure Diagram (mm)

